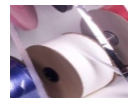
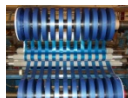




Customer + Product + Quality = *Infinite Possibilities.*

Silicone Liner Rolls

Special Handling Practices



infinite possibilities...



OPENING PACKAGING



1. On a flat surface, carefully cut open the using a safety knife or box cutter. Take care not to cut into the box; simply cut the packaging tape on all sides.
2. Open the box to expose the product

infinite possibilities...



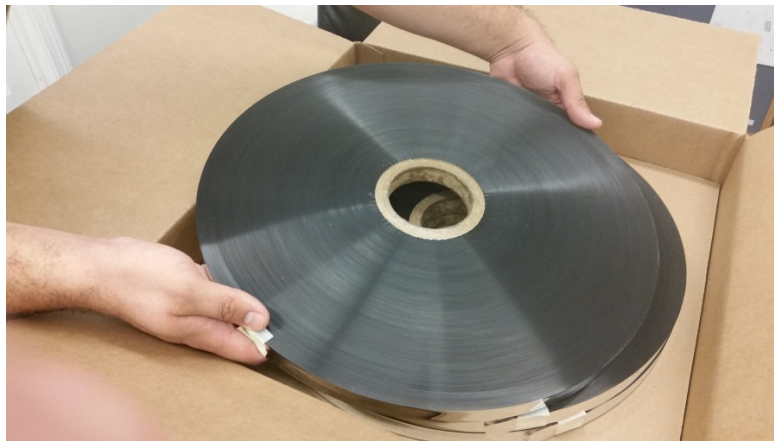
3. Remove the core insert from the center of the roll stack. This safety insert is used to prevent the rolls from shifting during transit.

Note: If the box of product is to be moved, simply replace the insert to secure the rolls.

infinite possibilities...



4. Pull the roll slightly to one side, pulling from the core.; place one hand under the roll for support.



5. Using the opposite hand, support the roll from the other side.

Note: Be sure to place your hands under the roll as far as possible to provide adequate support

infinite possibilities...



6. Carefully turn the roll upright



7. In the upright position, support the roll from the core and load onto the unwind shaft



infinite possibilities...

Thank you for making



your Business Partner!



infinite possibilities...